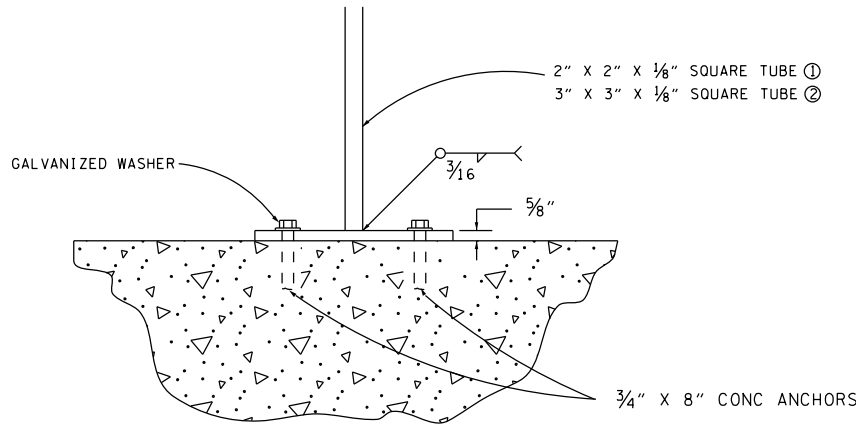
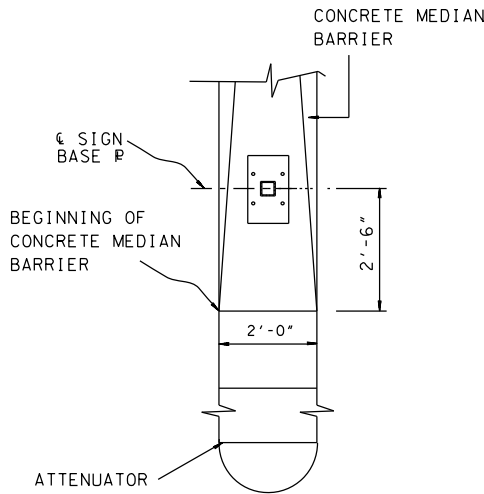


BASE PLATE DETAIL

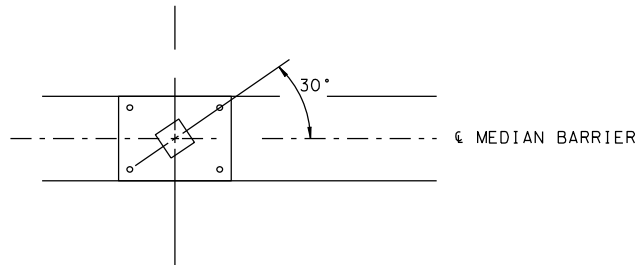


ELEVATION

DETAILS FOR MOUNTING  
SMALL AND REGULAR  
SIGNS ON CONCRETE MEDIAN BARRIERS ① ②  
(TO BE PAID FOR UNDER ITEM NO. 713-30.09)



LOCATION DETAIL FOR  
MOUNTING EXIT GORE SIGNS ON  
CONCRETE MEDIAN BARRIERS ③



SIGN ORIENTATION  
DETAIL FOR  
H.O.V. SIGNS MOUNTED  
ON CONCRETE MEDIAN BARRIERS ④

REV. 7-11-12: ADDED 6" WALL  
ATTACHMENT DETAIL AND NOTE ⑤

REV. 2-28-13: DELETED NOTE ①  
ADDED NOTE ⑥

REV. 7-2-15: REVISED GENERAL  
NOTE ⑥.

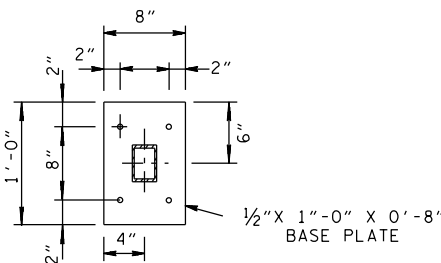
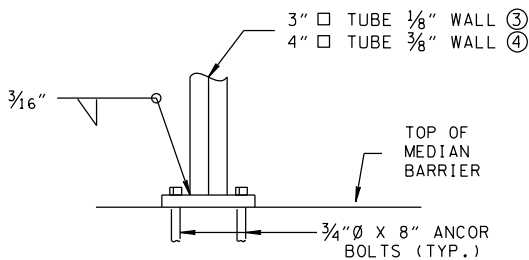


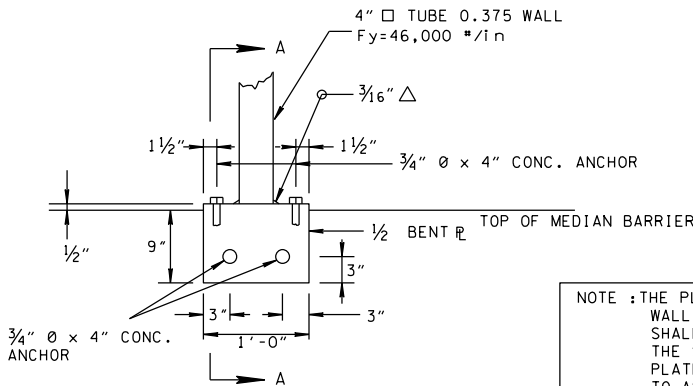
PLATE DETAIL



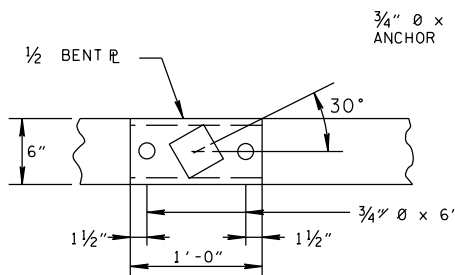
ELEVATION

DETAILS FOR MOUNTING  
LARGE SIGNS ON CONCRETE  
MEDIAN BARRIERS ③ ④

(TO BE PAID FOR UNDER ITEM NO. 713-30.10)



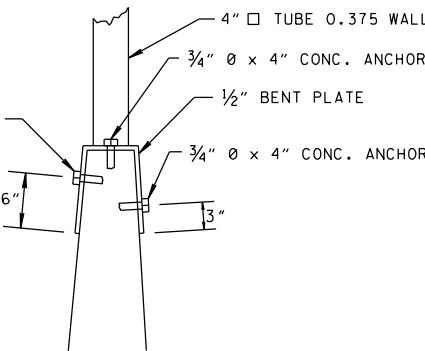
NOTE :THE PLATE SHALL BE MOUNTED OVER THE  
WALL AS SHOWN. ANY DAMAGE TO THE WALL  
SHALL BE REPAIRED AT THE EXPENCE OF  
THE SIGNING CONTRACTOR. POST AND  
PLATE SHALL BE GALVANIZED ACCORDING  
TO ASTM-A123.



PLAN

ATTACHMENT DETAIL FOR 6" WIDE WALL ⑤

(NOT INTENDED TO BE USED FOR NEW CONSTRUCTION)  
(TO BE PAID FOR UNDER ITEM NO.713-30.05)



SECTION A-A

#### GENERAL NOTES

- WELDING SHALL BE IN ACCORDANCE WITH AASHTO SPECIFICATIONS.
- ALL STEEL SHALL BE GALVANIZED AFTER FABRICATION AND CONFORMING TO THE REQUIREMENTS OF ASTM A123. DAMAGE TO THE COATING SHALL BE REPAIRED SUBSEQUENT TO ERECTION.
- MATERIAL FOR PLATES SHALL BE ASTM A36 STEEL.
- ALL BOLTS AND WASHERS SHALL BE MADE OF MATERIAL CONFORMING TO ASTM A307.
- MINIMUM CLEARANCE BETWEEN BOTTOM OF THE SIGN AND TOP OF BARRIER SHALL BE 48".
- PLATE TO BE CENTERED ON BARRIER CENTER LINE.
- ITEM NO. 713-30.09 AND 713-30.10 INCLUDES BASE PLATE SIGN POST, ANCHOR BOLTS, AND WELDING.

#### DESIGN NOTES

- FOR (18"x48") EMERGENCY MILE MARKER OR (12"x24", 12"x36" OR 12'x48") STANDARD MILE MARKERS.
- FOR (36"x48") SPEED LIMIT, (48"x72" OR 48"x60") TRUCK RESTRICTION SIGNS (IF DIRECTED BY REGIONAL TRAFFIC ENGINEER) OR (36"x36") DIAMOND WARNING SIGNS.
- FOR EXIT GORE SIGNS (72" X 48" OR 90" X 48").
- FOR H.O.V. SIGNS (84" X 60").
- FOR ATTACHMENT TO EXISTING 6" WIDE CONCRETE BARRIER WALLS ONLY.

MINOR REVISION -- FHWA  
APPROVAL NOT REQUIRED.

STATE OF TENNESSEE  
DEPARTMENT OF TRANSPORTATION

DETAILS FOR  
SIGNS MOUNTS  
ON CONCRETE  
MEDIAN BARRIERS

2-29-12

T-S-21